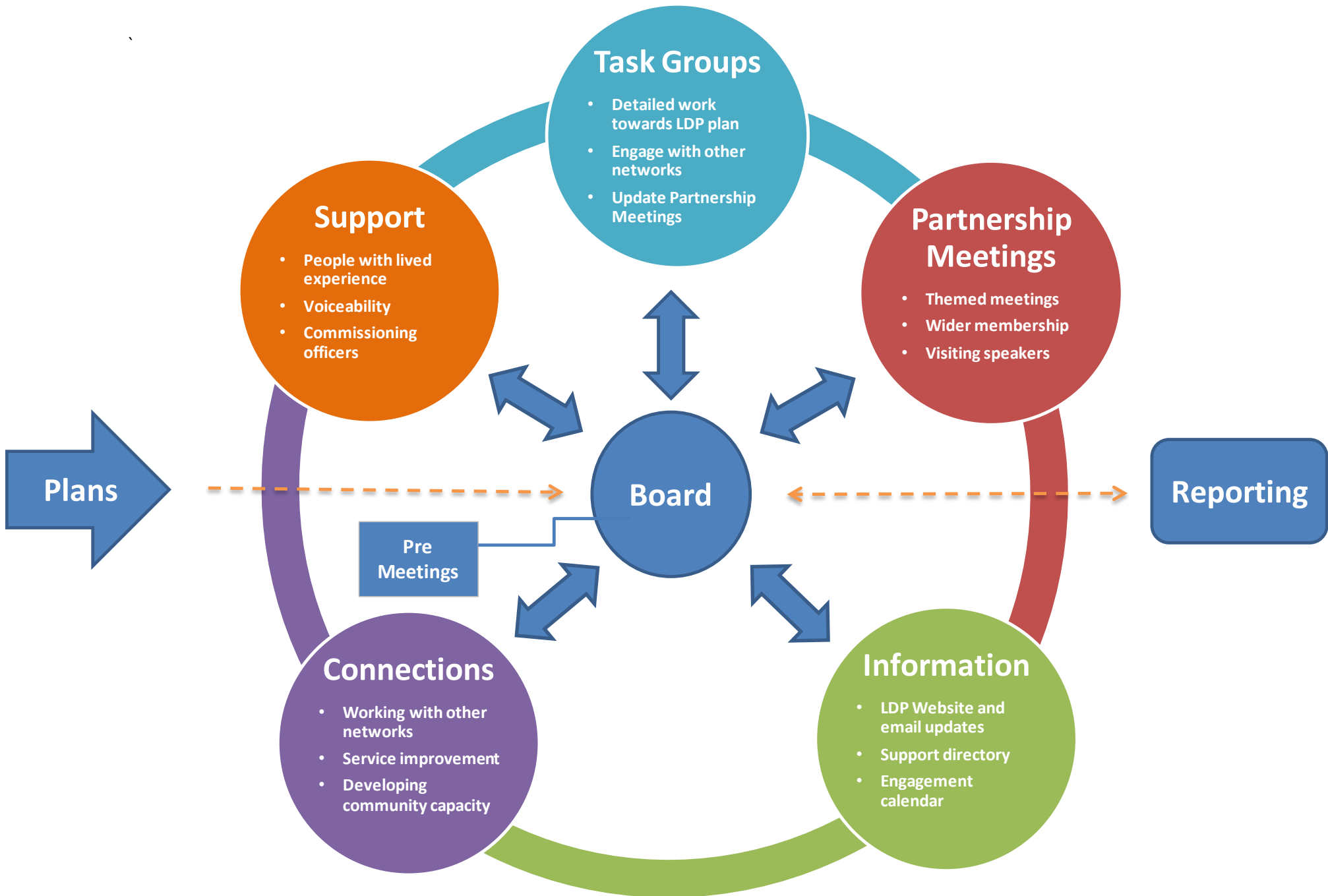
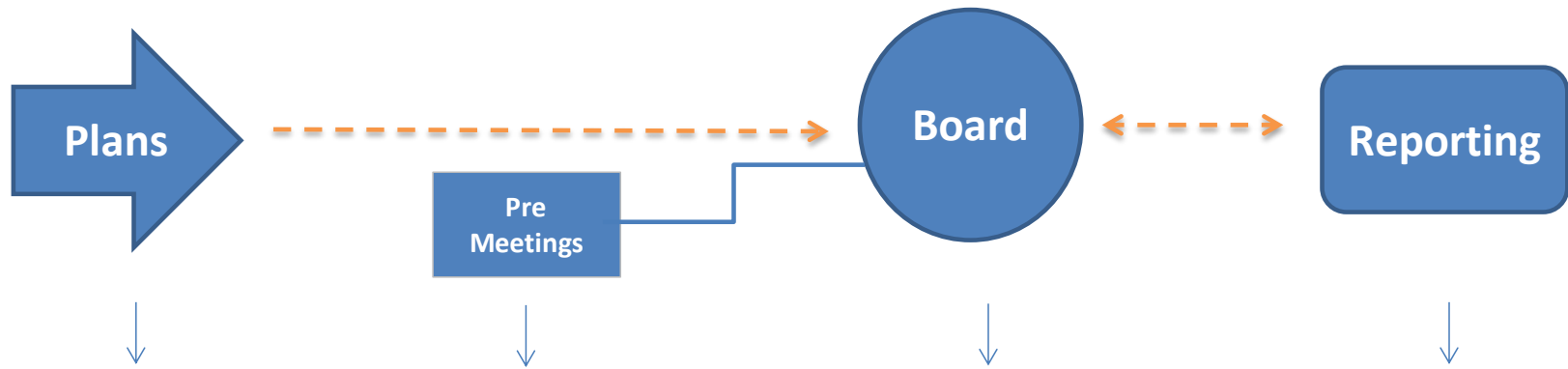




Review of the Learning Disability Partnership Board

21st November 2017





Plans

Including:

- Commissioning Strategies
- Transforming Care Plan
- Making it Real Personalisation Plan

Pre- Meetings

Supported by Voiceability:

- To enable people with a learning disability to understand the Board agenda and raise issues

Board

Supported by Commissioning Team

- Chaired by a senior manager
- Oversees the LDP Plan
- Voiceability to provide independent support and advocacy
- Business-like, co-ordinates and supports the work of the Partnership

Reporting

Overall progress and issues reported to:

- Joint Delivery Board
- Women and Children's Board (to be confirmed)

Key Principle

People who have lived experience of learning disability and family carers have a unique and valid viewpoint, alongside that of professionals, which should be fully and fairly taken into account in the planning, review and delivery of commissioning strategies and services

If you have any comments about these changes please contact us:

Mick - tel. 01522 554014

email -

mick.skipworth@lincolnshire.gov.uk